

Excerpted from

Photoshop Lightroom Adventure

Mastering Adobe's next-generation tool for digital photographers

Copyright © 2007 by Mikkel Aaland

O'REILLY®

<http://digitalmedia.oreilly.com/lightroom>

Organizing the Lightroom Workspace

The Lightroom workspace is extremely malleable. You can easily enlarge or shrink the various windows to suit your viewing and working preferences, whether you are on a laptop in the field or your cinema display in the studio.

Let's start with the obvious and then move on to more hidden ways of organizing the Lightroom workspace. Everything here applies to all the modules.

The Obvious

If you are like me, if you see certain icons you naturally want to click on them to see what they do.

See the triangle shaped icons on the side panels and top and bottom? (I circled them in red.) This is a quick way to get extra real estate. *Figure 1-18*

I positioned my mouse and clicked on them one at a time and now I have a screen that only shows my preview images without any extra clutter. *Figure 1-19* To reveal the side panels and filmstrip and menu bar simply click on the triangle again. (Rolling your cursor over the triangle while the side panels are hidden will temporary reveal them. They will disappear when the cursor is moved on.)



Figure 1-18



Figure 1-19

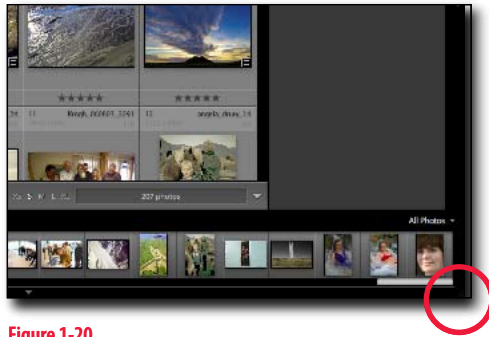


Figure 1-20

You can also resize the entire Lightroom window to fill a specific area on your screen by placing your cursor on the bottom right of the window, then clicking and dragging to the desired size. *Figure 1-20*

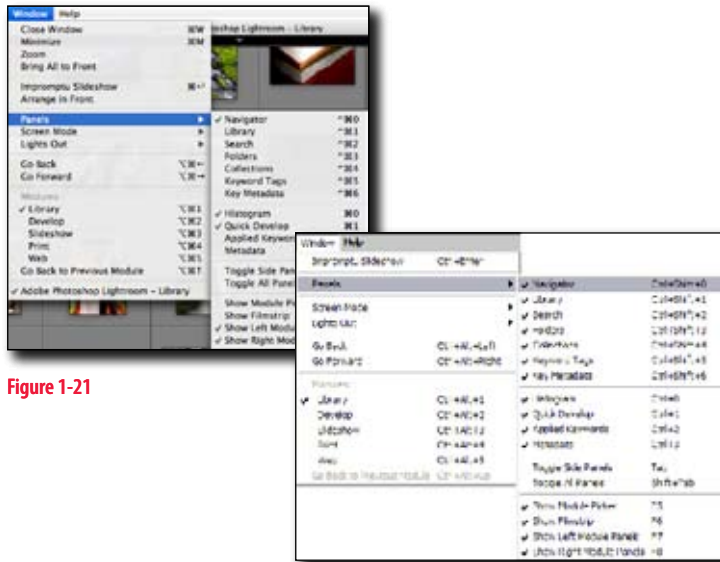


Figure 1-21

Menu commands

Menu Commands are another obvious way of controlling the look of your Lightroom work area. Under the Window menu you have several options. The Mac menu (left) will be slightly different from the Windows version (right). *Figure 1-21*

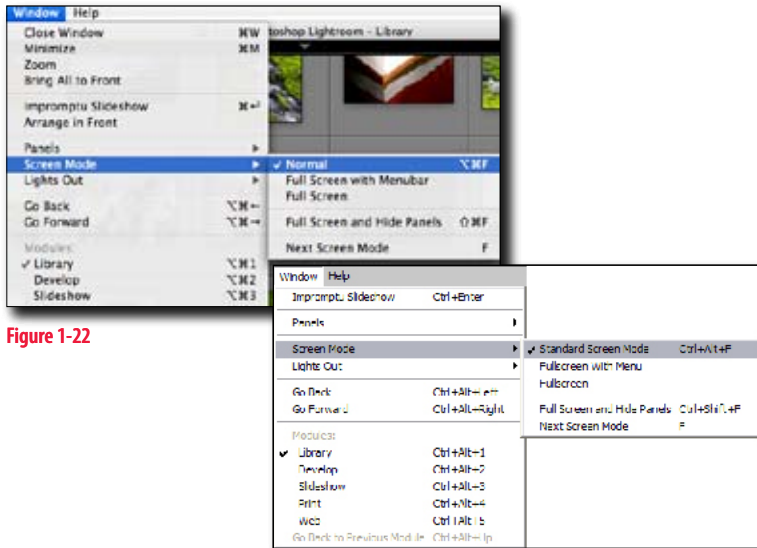


Figure 1-22

Screen Mode options

Changing Screen Modes can be done directly from the menu bar (Window > Screen Mode). *Figure 1-22* Learning the simple keystroke F, will toggle you between screen modes and will make your workflow much more efficient. Again the menu will look slightly different between Mac (left) and Windows (right).

Normal (or Standard) Screen Mode

When you set your Screen Mode to Normal (called Standard in Windows) this is what you get. *Figure 1-23* The menu bar is visible at the top and all the panels and module picker are visible as well. Of course, you can further customize the screen mode by hiding the panels or module picker by clicking on the small side triangles as described previously.



Figure 1-23

Full Screen with menu bar

Setting your Screen Mode to Full Screen with Menubar gives you this. The screen looks similar to the Normal (or Standard) screen, however it will fill up your display screen and you won't have screen resize capabilities. *Figure 1-24*



Figure 1-24

Full Screen

With Full Screen the menu bar is gone, unless you roll your mouse over it. Side panels and filmstrip remain unless you choose to hide them. *Figure 1-25*



Figure 1-25



Figure 1-26

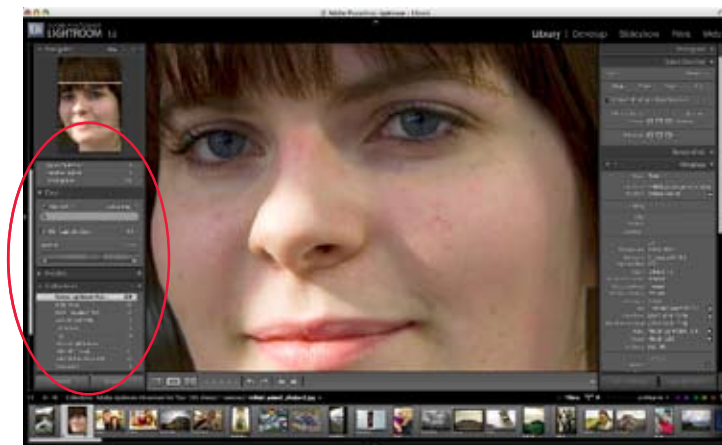


Figure 1-27

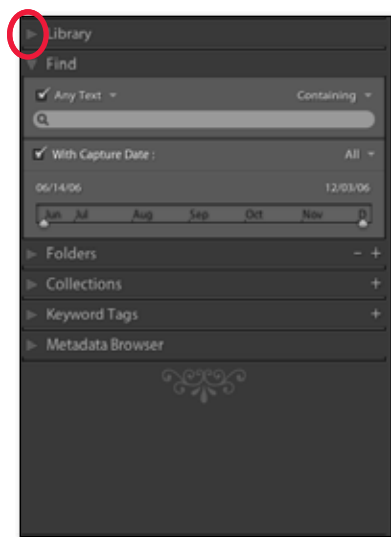


Figure 1-28

Full Screen & Hide Panels

This mode maximizes the image viewing area and yet maintains some of the viewing and sorting tools. *Figure 1-26*

Not So Obvious

There are a couple not-so-obvious commands that will help you more efficiently organize and frame the Lightroom work area.

For example, by default, all the tabs in all the side panels will open sequentially and remain open when you click on them.

Figure 1-27

If you hold the Opt/Alt key while clicking on any side panel tab triangle (circled) only one tab will open at a time in the so-called Solo mode. *Figure 1-28* To return to the default behavior hold the Opt/Alt key and click on the triangle again.

Tab Contextual Menu

You can also control the behavior of the Tabs by right-clicking (or Control-clicking on a Mac) anywhere (except on the triangle) on the Tab header. You will get the contextual menu shown here.

Figure 1-29 If you select Solo Mode you will duplicate the behavior described previously (holding the Opt/Alt key while clicking on the Tab triangle.) You can also hide individual Tabs by deselecting the check mark next to their name. (Shown are all visible. The choices are applied on a Panel by Panel basis.)

***TIP** Photoshop users are probably familiar with using the Tab key to hide tool palettes. Selecting the Tab key in Lightroom hides (or reveals) the side panels and is a quick way to maximize the image viewing area.*

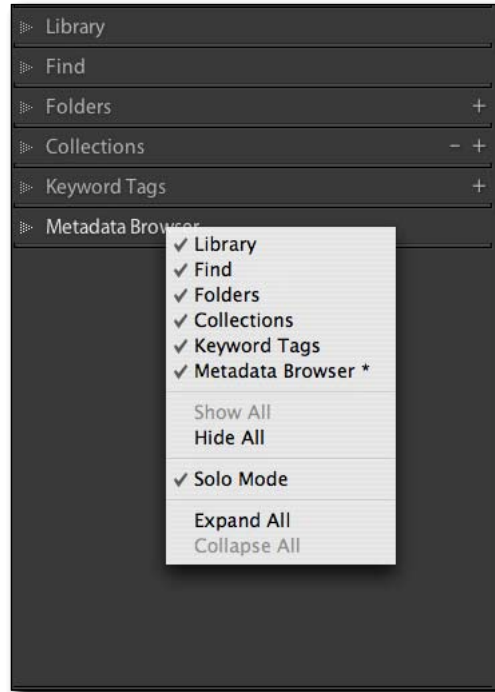


Figure 1-29

Setting Interface Preferences

Lightroom Interface preferences can also be used to customize the look and feel of the workspace. Open the Preferences (under the Lightroom menu on a Mac, under the Edit Menu on Windows) and click on the Interface tab. **Figure 1-30** Here you will find choices for many things including the look of the Panel End Mark (I like the Flourish!) to the Panel Font Size to the Fill Color and Overlay Texture.

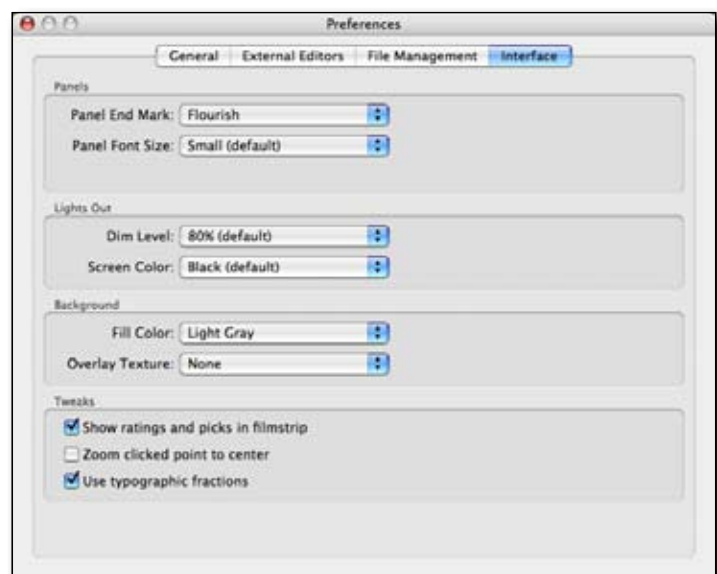


Figure 1-30



Figure 1-31



Figure 1-32



Figure 1-33

Lights On Lights Out

This falls in the category of way cool, especially for those who like to toggle between working on their images and viewing (or showing off) their images without distraction. Figure 1-31 shows the viewing area with the Lights On, the default setting. All the panels and Filmstrip are clearly visible.

Figure 1-32 shows the viewing area with Lights Dim selected. The Panels and Filmstrip are still visible, albeit dimmed.

Figure 1-33 shows the work area with Lights Out. Now the image is easily viewable with no distractions.

To control the Lights Out feature you can use the menu control Window > Lights Out. It's far easier, however, just to select the L key and toggle between states.

O'REILLY®

<http://digitalmedia.oreilly.com/lightroom>